

EJIW EAST JORDAN
 IRON WORKS EST. 1883
 800-626-4653
 www.ejiw.com
 MADE IN USA

PRODUCT NUMBER
00367582

CATALOG NUMBER
3675A2
3675Z

ASSEMBLY

LOAD RATING

HEAVY DUTY

COATING

DIPPED

ESTIMATED WEIGHT

FRAME: 43 LBS 20kg
 COVER: 14 LBS 6kg
 UNIT: 57 LBS 23kg

MATERIAL SPECIFICATION

COVER - GRAY IRON
 ASTM A48 CL35B
 FRAME - GRAY IRON
 ASTM A48 CL35B

OPEN AREA
 N/A

DESIGNATES MACHINE SURFACE

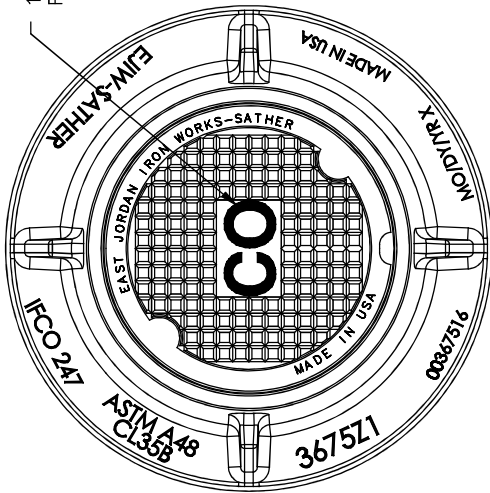
DRAWN	DATE
TCL	01/05/04

LAST REVISED	DATE
DAL	08/20/07

REFERENCE INFORMATION

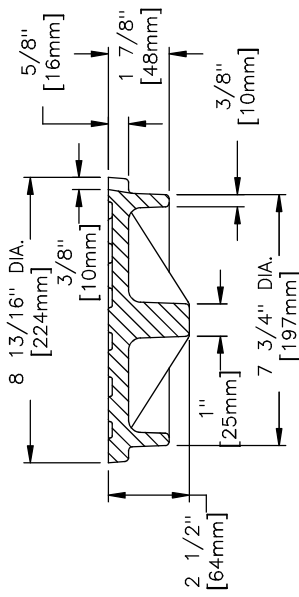
00367540
 00367516

1 1/4" [32mm] RAISED
 FLAT FACED LETTERING

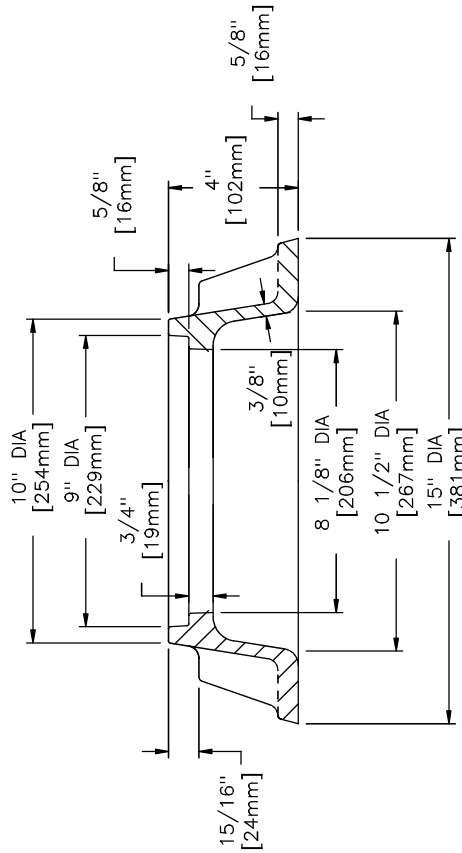


(1) OPEN PICKHOLE
 1" [25mm]

COVER BOTTOM



COVER SECTION



SECTION VIEW

CONFIDENTIAL: This drawing is the property of East Jordan Iron Works, Inc. and embodies confidential information, trade secret information, and/or know how that is the property of East Jordan Iron Works, Inc. © Copyright 2006 East Jordan Iron Works, Inc.