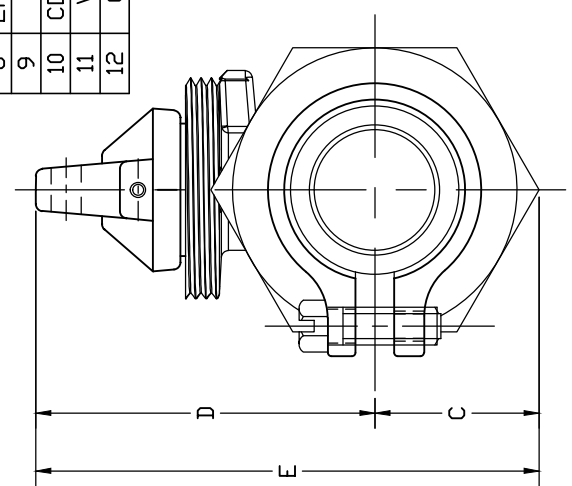


No.	DESCRIPTION	MATERIAL DESCRIPTION
1	BODY	CAST LOW LEAD BRASS ALLOY
2	CAP	CAST BRASS ASTM B62 ALLOY C83600
3	STEM	LOW LEAD BRASS ALLOY
4	BALL	LOW LEAD BRASS ALLOY
5	GASKET	ASTM D2000 (NITRILE)
6	SOLID PIN	AISI 303 STAINLESS STEEL
7	O-RING	ASTM D2000 (EP)
8	END PIECE	CAST LOW LEAD BRASS ALLOY
9	O-RING	ASTM D2000 (NITRILE)
10	COUP. NUT	CAST BRASS ASTM B62 ALLOY C83600
11	WASHER	POLYPROPYLENE
12	GASKET	NITRILE ASTM D2000

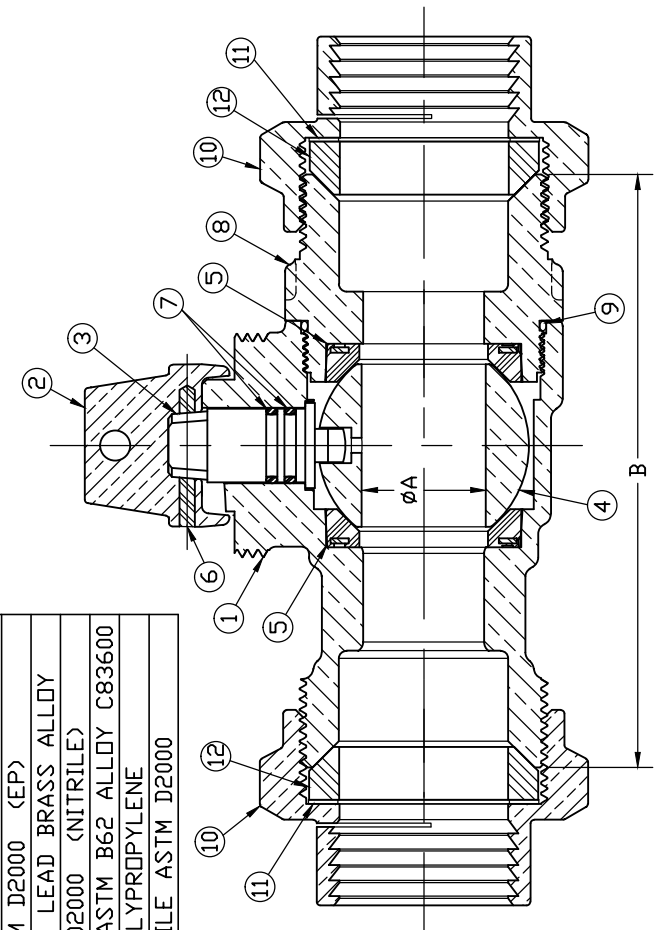


SIZE	øA	B	C	D	E
1"	1.00	4.92	1.36	2.81	4.17
1 1/2"	1.50	5.50	1.66	3.43	5.09
2"	2.00	6.57	1.82	3.79	5.61

ALL WETTED PARTS ARE LOW LEAD BRASS ALLOY

DWG NUMBER
E25142N
442-MRKTG

TITLE ID AND OWNERSHIP OF THIS ENGINEERING DATA REMAINS IN Mueller Co. NO USE IS TO BE MADE OF THIS DATA WITHOUT THE EXPRESS AUTHORIZATION BY Mueller Co. ASSSENT ON THE PART OF THE RECIPIENT TO THESE CONDITIONS IS PRESUMED



FILEPATH: PROD-ENG\MUELLER\ASYSUBMITTALS\E25142N

DRFTR	RVB	2/6/15
CHKR		
ENGR		
MGR		
BY	DATE	
STK No.		
MAT'L		



UNLESS OTHERWISE NOTED THIRD ANGLE PROJECTION
 SURFACE PREPARATION: 000
 BRK (FINISH) ---XXX RMS
 TOLERANCE(S) LINEAR: ± .000
 ANGULAR: ± 0°00'

REV	ECR	DESCRIPTION	DATE	BY	CHKR

DESCR. INLINE LLB MINN TOP BALL CURB VALVE
 (IPS-PE PJ x IPS-PE PJ)
 DWG NUMBER
 E25142N