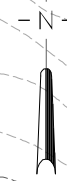
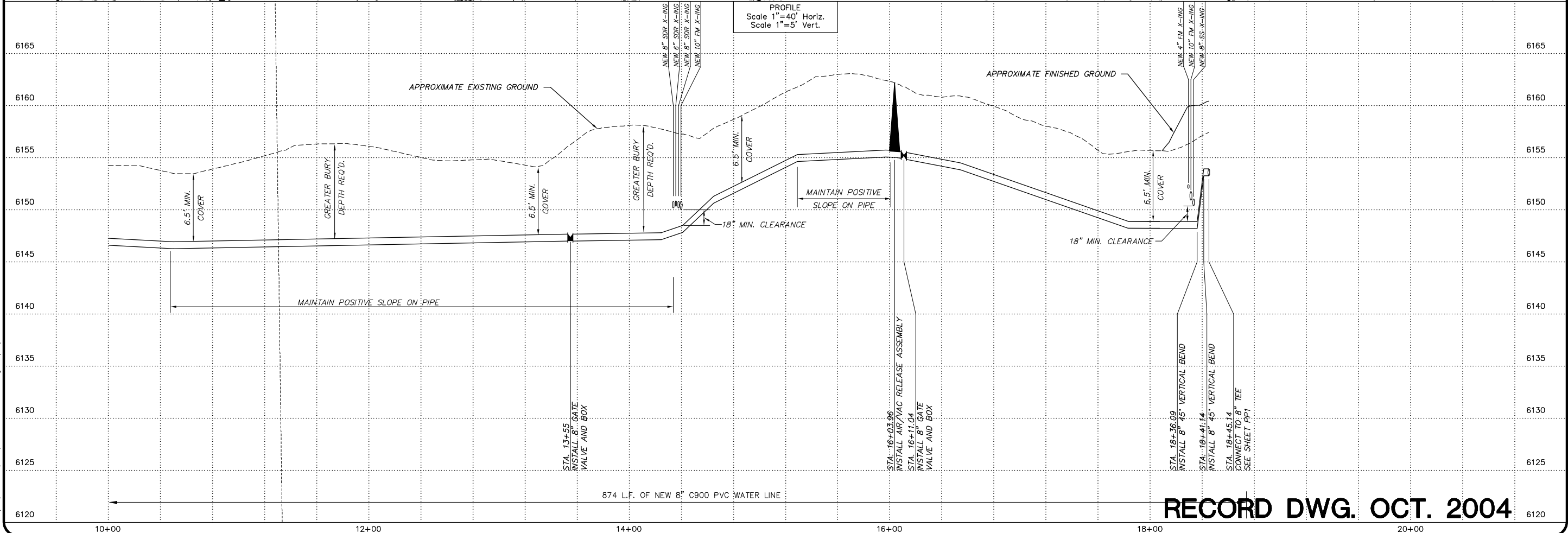
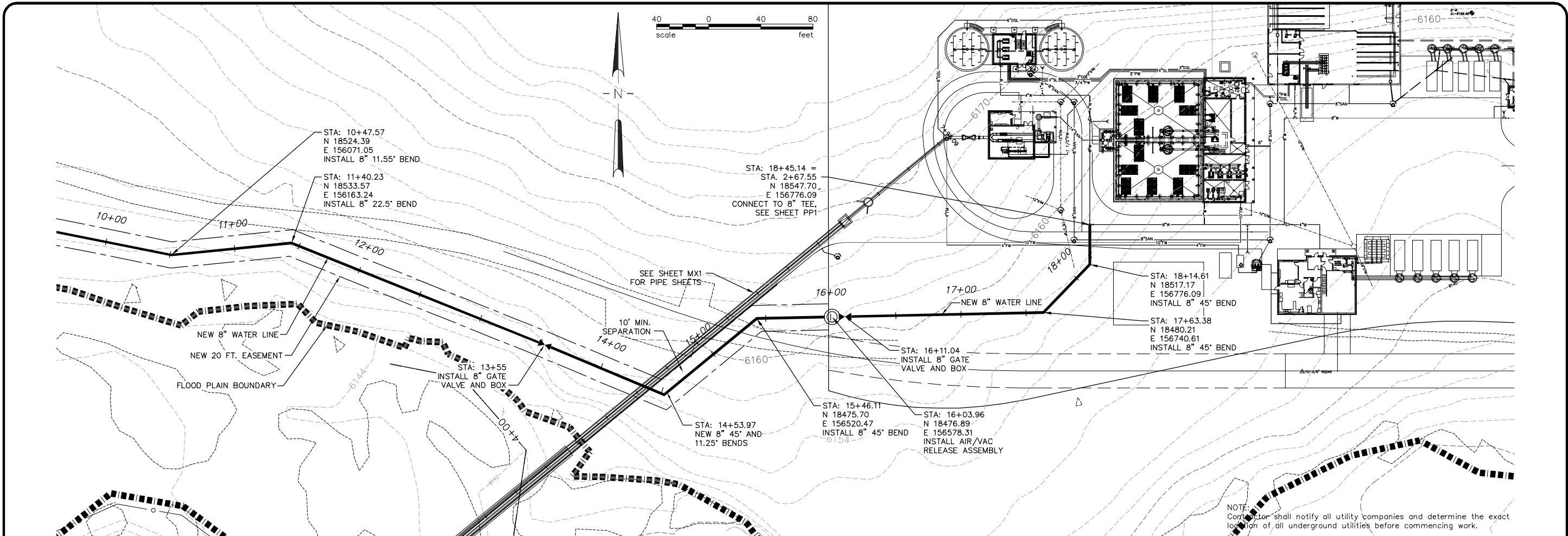


G:\06\357120\DWG\BASE_HKM_COORDS.dwg 10/13/2004 5:14:11 PM MDT



| No. | Revision | By | Date |
|-----|-------------|-----|----------|
| 1 | Realignment | RLA | 12/10/02 |

WARNING: IF THIS BAR DOES NOT MEASURE 1" THEN DRAWING IS NOT TO SCALE.

Project No. 6M357120 • BASE_HKM_COORDS.DWG • Date MAY 2002 • Designed RLA • Drawn RJA • Checked RLA • Approved RLA

**MEADOW VILLAGE WATER RECLAMATION FACILITY
BIG SKY, MONTANA**

**NEW 8" POTABLE WATER SUPPLY LINE
STA. 10+00 TO STA. 18+45.14**



HKM Engineering Inc.
 Granite Tower Building
 222 N. 32nd St., Suite 700
 P.O. Box 31318
 Billings, MT 59107-1318
 (406) 656-6399, FAX (406) 656-4398



Sheet No.
PP12

RECORD DWG. OCT. 2004