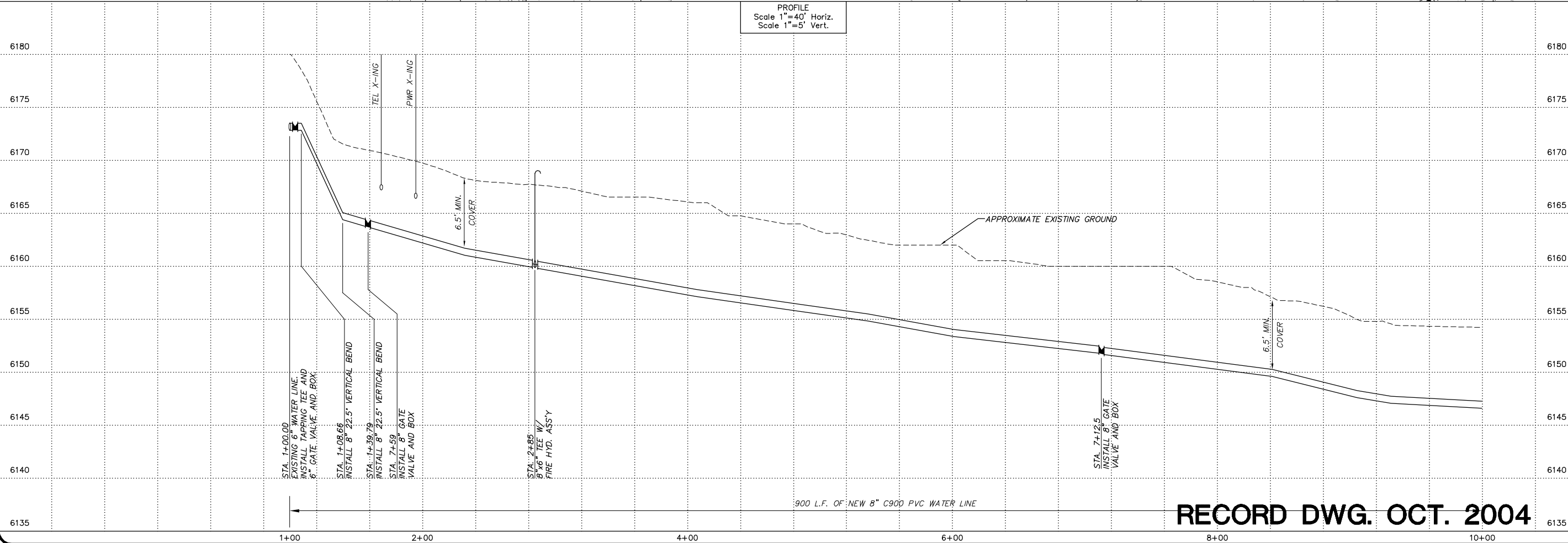
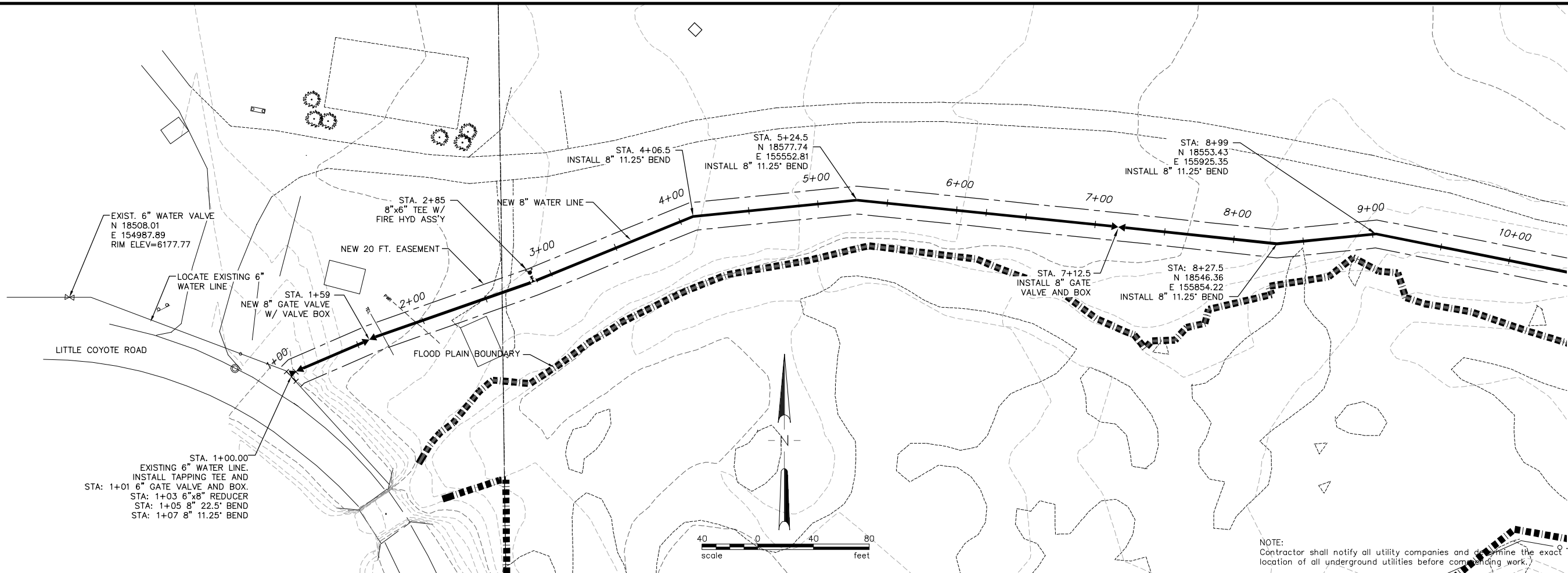


G:\08\357120\DWG\BASE_HKM_COORDS.DWG 10/13/2004 5:14:11 PM MDT



No.	Revision	By	Date
1	Realignm	RLA	12/10/02

WARNING
IF THIS BAR DOES
NOT MEASURE 1"
THEN DRAWING IS
NOT TO SCALE

Project No. 6M357120 • BASE_HKM_COORDS.DWG • Date MAY 2002 • Designed RLA • Drawn RJA • Checked RLA • Approved RLA

**MEADOW VILLAGE WATER RECLAMATION FACILITY
BIG SKY, MONTANA**

**NEW 8" POTABLE WATER SUPPLY LINE
STA.1+00 TO STA.10+00**



HKM Engineering Inc.
Granite Tower Building
222 N. 32nd St., Suite 700
P.O. Box 31318
Billings, MT 59107-1318
(406) 656-6399, FAX (406) 656-4398



Sheet No.
PP11

RECORD DWG. OCT. 2004